

BITEC Live is a new state-of-the-art live entertainment venue, offering a clear event scope and operating to international standards at BITEC BURI. A diverse range of concerts, entertainment, e-sports, product launch, conference and corporate functions are well-suited for hosting in BITEC Live.

BITEC Live	Width (m.)	Length (m.)	Height (m.)	Sq.m.	Capacity Seating (pax.)	Capacity Standing (pax.)	Booth (3x3 m.)	Banquet with Stage
G. Floor South stage	59	120	12	7,000	5,000	10,000	390	n/a
G. Floor East stage					6,500			3,000
G. Floor Annex hall	10	120	5	1,200	n/a	n/a	n/a	n/a
G. Floor Semi Outdoor	12	24	5	240	n/a	n/a	n/a	n/a
2nd Floor Amphitheater	14	116	3	1,600	1,411	n/a	n/a	n/a
2nd Floor Multi-Functional	10	23	n/a	230	n/a	n/a	n/a	n/a

\* Capacity may vary depending on the production and activity.



**Rigging Point**

200 / 500 kg. per node



**Floor load**

1,500 kg. per sq.m. (G. Floor)  
200 kg. per sq.m. (Annex Hall ▪ 2nd Floor)



**Power supply**

Alternating current system 3,450 Amp.  
Power Socket (2P+E 220V. / 3P+N+E 380V. )



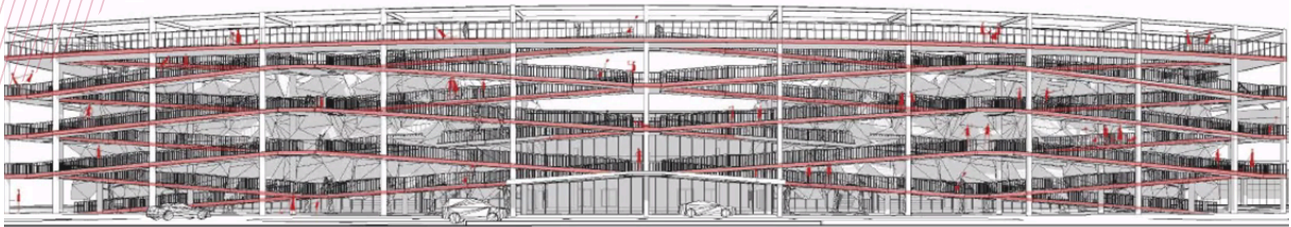
**Parking capacity**

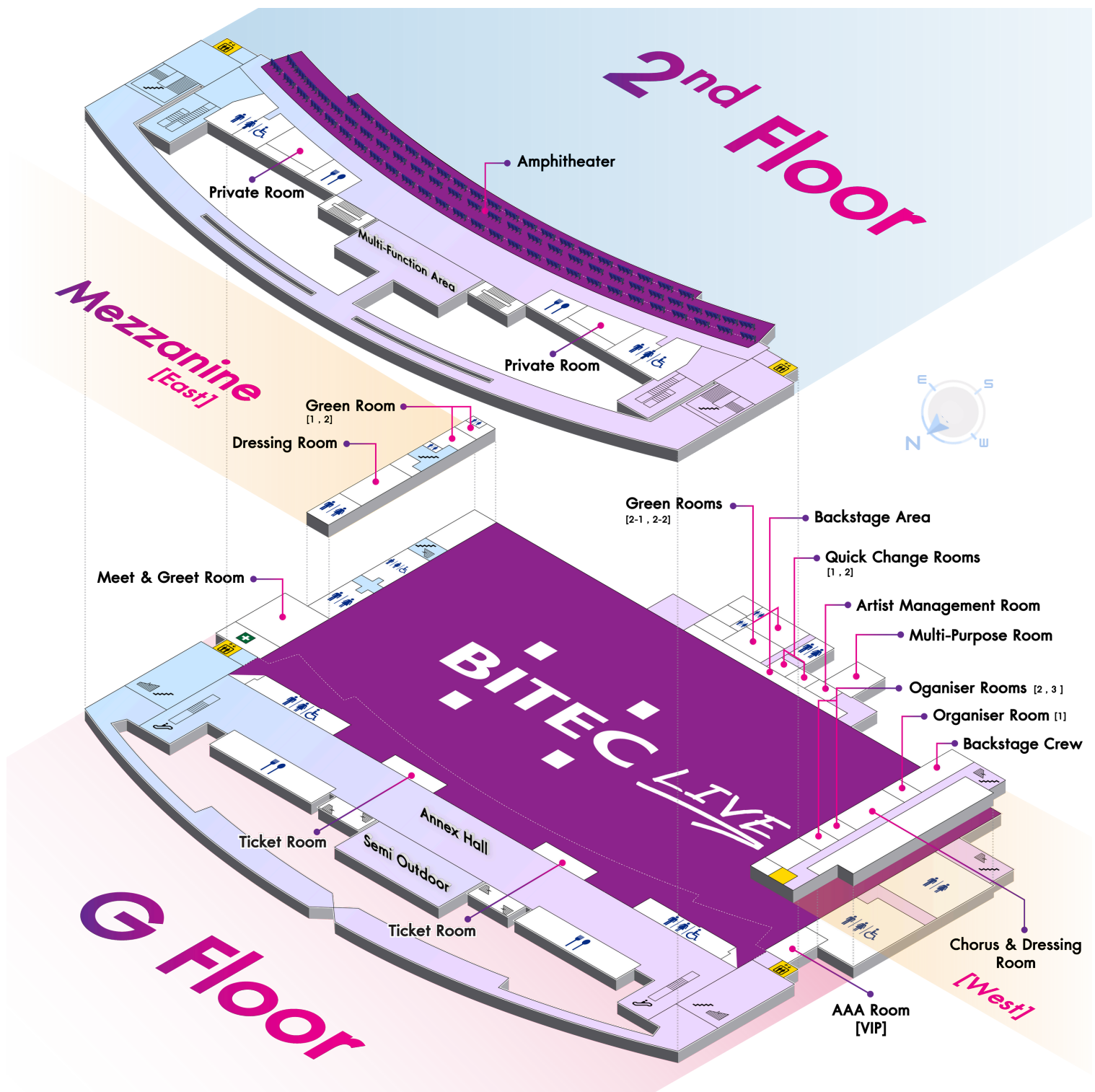
Indoor are 4,000 cars / Outdoor area 1,500 cars  
Artist area 13 cars



**Acoustic wall**

Sound Transmission Class(STC) 55  
Reverberation time(RT) 1.6





### G Floor

BITEC Live Hall	7,000	sqm.
Annex Hall	1,200	sqm.
Ticket Room 1, 2	38	sqm.
Semi Outdoor	240	sqm.
First Aid Room	39	sqm.
Meet & Greet Room	110	sqm.
Green Room 2-1, 2-2	51	sqm.
Quick change room 1, 2	13	sqm.
Artist Management	18	sqm.
Multi Purpose Room	48	sqm.
AAA Room (VIP)	26	sqm.
Restroom : Northeast	M 7 (u 5) / W 9 / H 1	
Restroom : East	M 6 (u 7) / W 10 / H 1	
Restroom : West	M 36 (u 41) / W 38 / H 1	
Restroom : Northwest	M 7 (u 5) / W 9 / H 1	

### M Floor (East)

Dressing Room	57	sqm.
Green Room 1-1	25	sqm.
Green Room 1-2	15	sqm.

### M Floor (West)

Backstage Crew	61	sqm.
Chorus & Dressing Room	59	sqm.
Organiser Room 1	20	sqm.
Organiser Room 2, 3	21	sqm.

### 2nd Floor

Amphitheater (Fixed Seating)	1,411	seats
Multi Function Area	59	sqm.
Private Room 1, 2	20	sqm.
Restroom : Northeast	M 8 (u 8) / W 15 / H 1	
Restroom : Northwest	M 8 (u 8) / W 15 / H 1	